

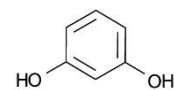
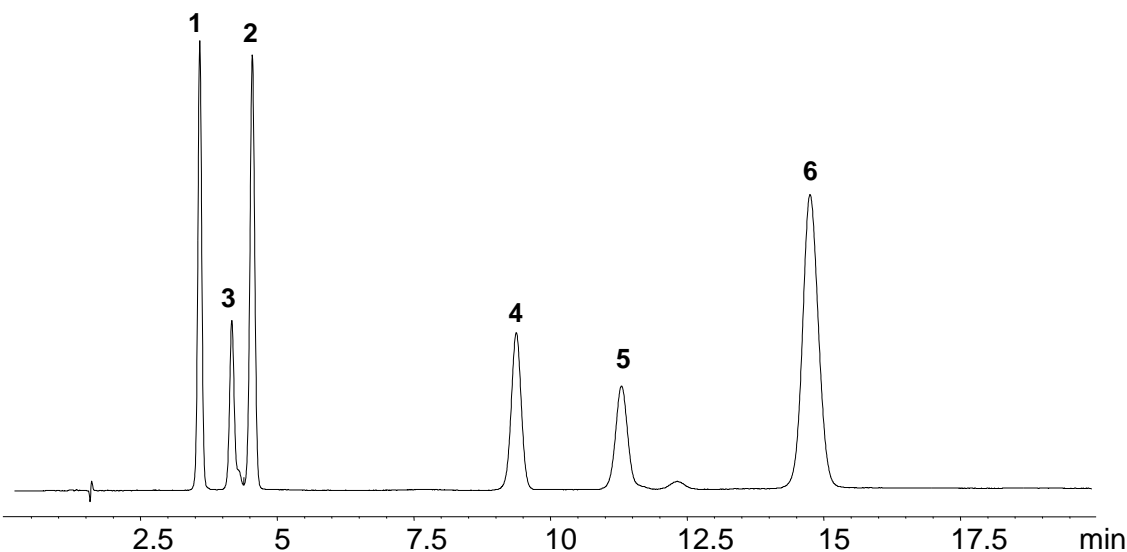
# Catechols Mixture Separation (I)

**ACE**<sup>®</sup>  
Ultra-inert  
UHPLC & HPLC Columns

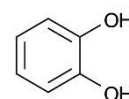
Application #AN1430

## Conditions

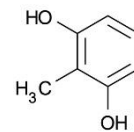
Column: ACE 3 CN-ES  
Dimensions: 150 x 4.6 mm  
Part Number: EXL-1113-1546U  
Mobile Phase: 20 mM H<sub>3</sub>PO<sub>4</sub> in MeCN/H<sub>2</sub>O (25:75 v/v)  
Flow Rate: 1.5 mL/min  
Injection: 5 µL  
Temperature: 30 °C  
Detection: UV, 270 nm



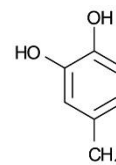
1. Resorcinol



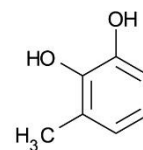
2. Catechol



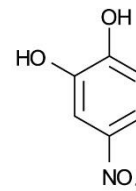
3. 2-Methylresorcinol



4. 4-Methylcatechol



5. 3-Methylcatechol



6. 4-Nitrocatechol