

Artificial Sweeteners (Stevia Glycosides)

ACE[®]
Ultra-inert
UHPLC & HPLC Columns

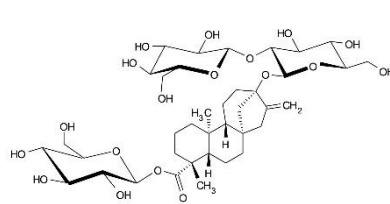
Application #AN1020

Conditions

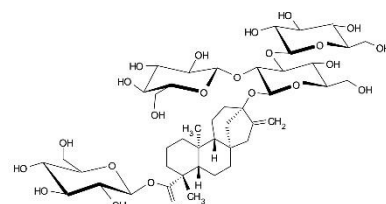
Column: ACE Excel 2 SuperC18
Dimensions: 150 x 2.1 mm
Part Number: EXL-1011-1502U
Mobile Phase: A: 10 mM sodium dihydrogen phosphate pH 2.8 in H₂O
B: 10 mM sodium dihydrogen phosphate pH 2.8 in H₂O/MeCN (20:80 v/v)

Time (mins)	%B
0	39.5
4	48.0

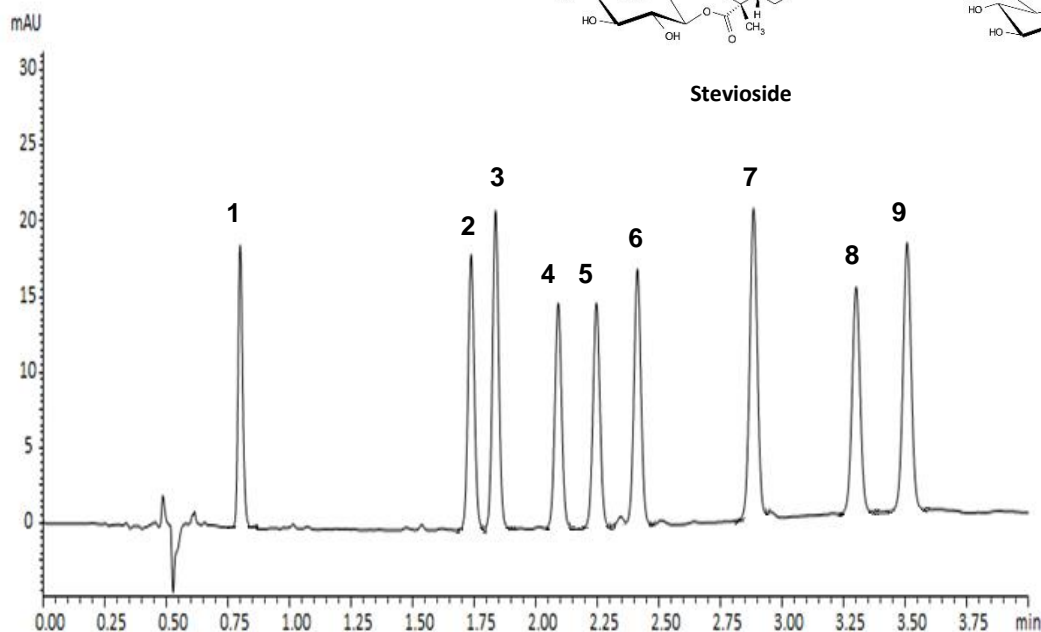
Flow Rate: 0.6 mL/min
Injection: 1 µL
Temperature: 50 °C
Detection: UV, 200 nm



Stevioside



Rebaudioside A



1. Rebaudioside D
2. Rebaudioside A
3. Stevioside
4. Rebaudioside F
5. Rebaudioside C
6. Dulcoside A
7. Rubusoside
8. Rebaudioside B
9. Steviolbioside

Reproduced with permission of Shimadzu Europe GmbH. Analysed on Shimadzu Nexera X2.
<http://images2.advanstar.com/PixelMags/lcgc-eu/pdf/2013-10-sp.pdf>
© 2015 ACT Ltd. All rights reserved. All products are available worldwide.

For more information contact your local ACE distributor or visit
www.ace-hplc.com or email: info@ace-hplc.com


ACE[®]
UHPLC & HPLC
Columns