

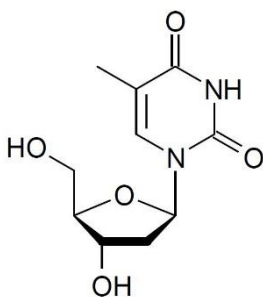
# Separation of $\beta$ -thymidine (dT) and $\alpha$ -thymidine

**ACE**<sup>®</sup>  
Ultra-inert  
UHPLC & HPLC Columns

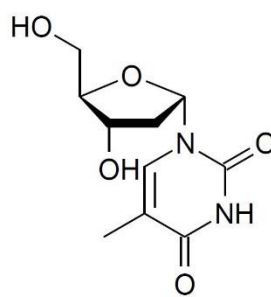
Application #AN6000

## Conditions

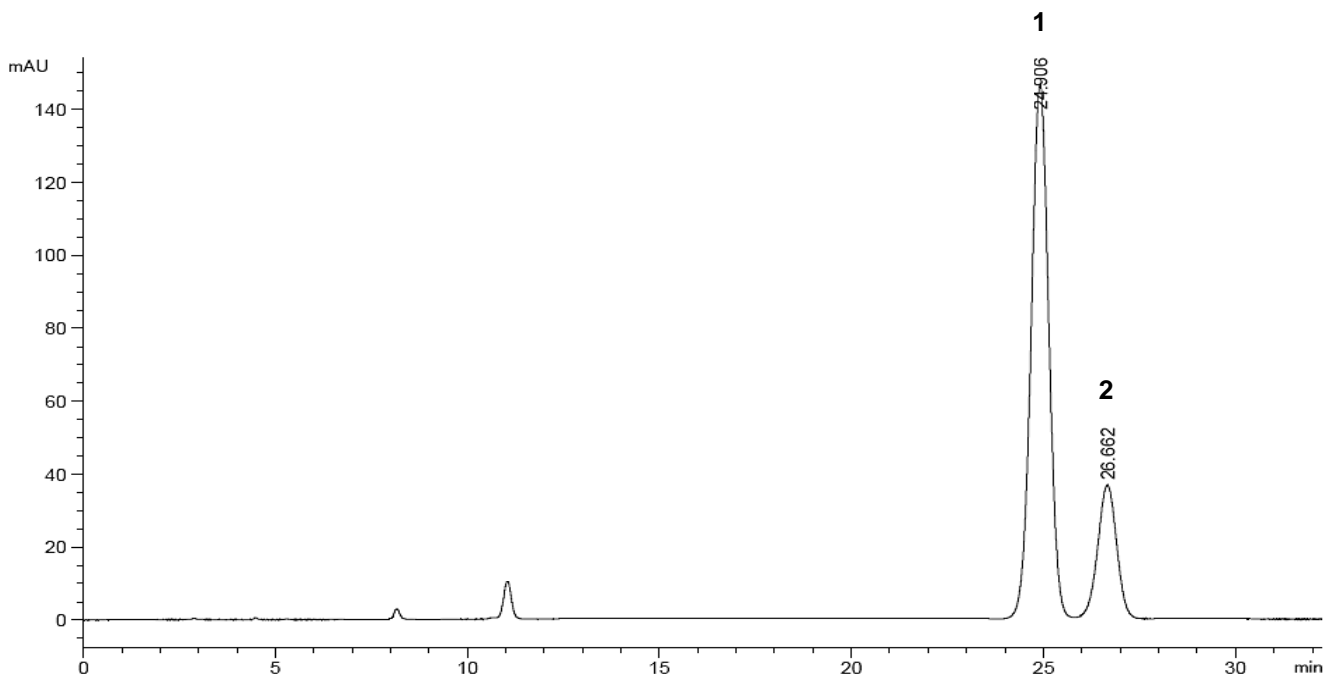
Column: ACE Excel 5 C18-AR  
Dimensions: 150 x 4.6 mm  
Part Number: EXL-129-1546U  
Mobile Phase: 10 mM ammonium acetate (aq.)  
Flow Rate: 0.5 mL/min  
Injection: 5  $\mu$ L  
Temperature: 60  $^{\circ}$ C  
Detection: UV, 260 nm



1.  $\beta$ -thymidine



2.  $\alpha$ -thymidine



© 2018 ACT Ltd. All rights reserved. All products are available worldwide.

For more information contact your local ACE distributor or visit  
[www.ace-hplc.com](http://www.ace-hplc.com) or email: [info@ace-hplc.com](mailto:info@ace-hplc.com)

  
**ACE**<sup>®</sup>  
UHPLC & HPLC  
Columns