

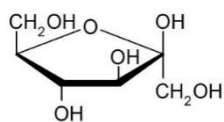
Separation of Fructose, Sorbitol, Glucose and Sucrose

ACE[®]
Ultra-inert
UHPLC & HPLC Columns

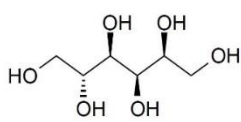
Application #AN6590

Conditions

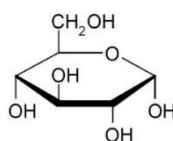
Columns:	ACE Excel 5 NH ₂
Dimensions:	250 x 4.6 mm
Part Numbers:	EXL-1214-2546U
Mobile Phase:	MeCN/H ₂ O (80:20 v/v)
Flow Rate:	3.0 mL/min
Injection:	20 μL
Temperature:	40 °C
Detection:	RI



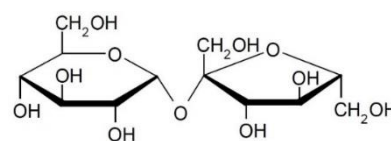
1. Fructose



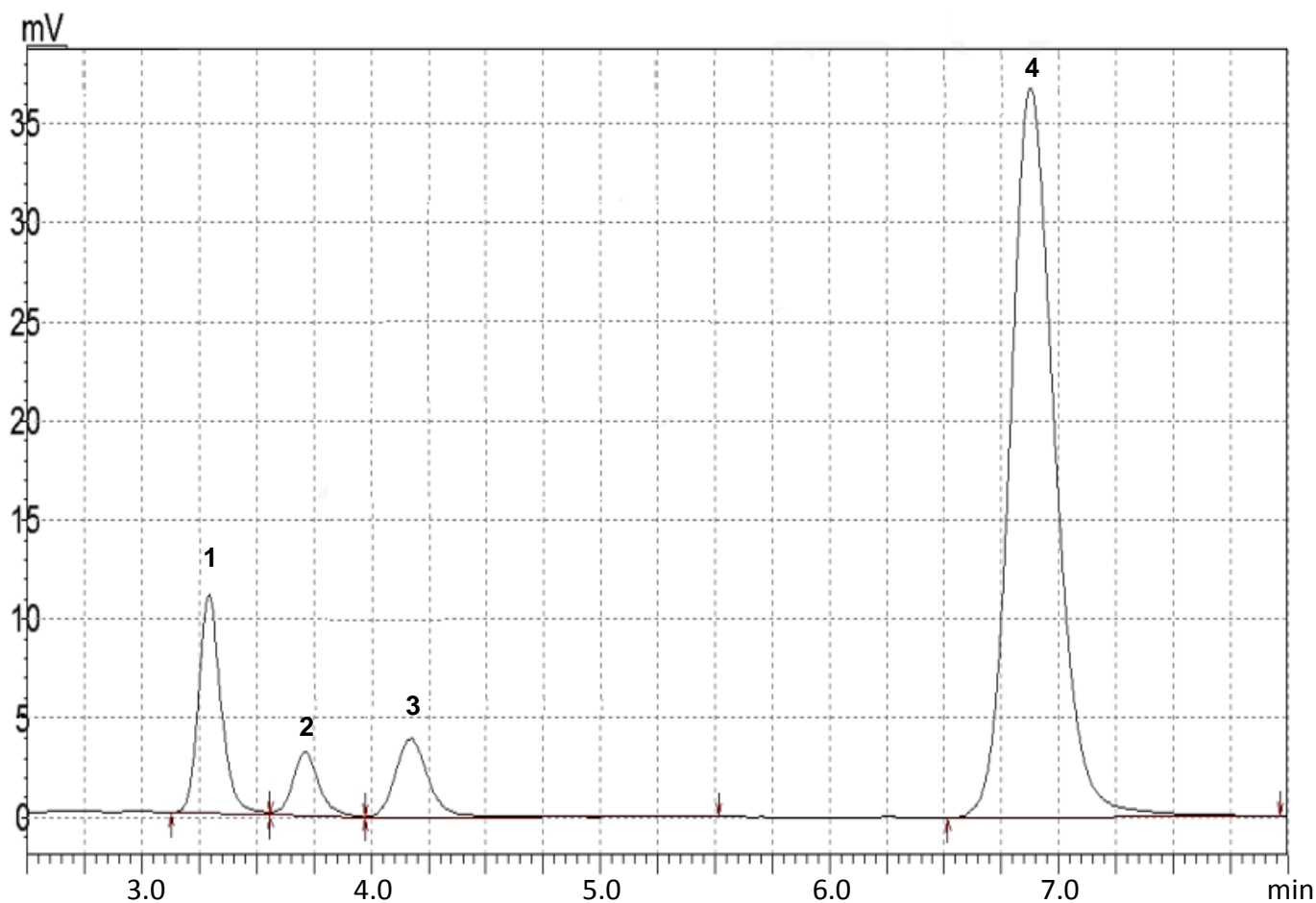
2. Sorbitol



3. Glucose



4. Sucrose



© 2018 ACT Ltd. All rights reserved. All products are available worldwide.

For more information contact your local ACE distributor or visit
www.ace-hplc.com or email: info@ace-hplc.com


ACE[®]
UHPLC & HPLC
Columns