

Determination of Luteolin in Honeysuckle

ACE[®]
Ultra-inert
UHPLC & HPLC Columns

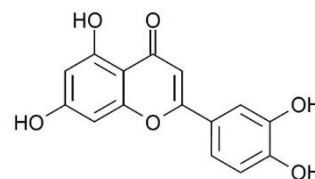
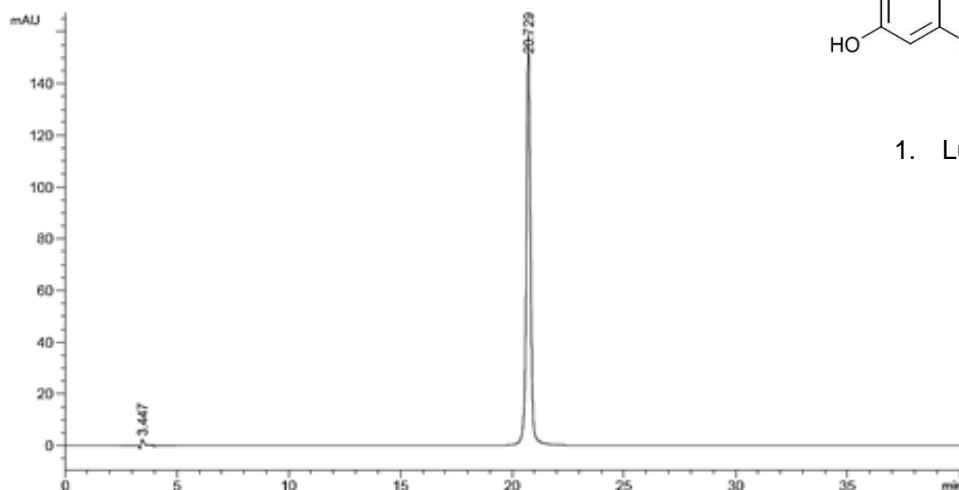
Application #AN5080

Conditions

Column: ACE Excel 5 Phenyl
Dimensions: 250 x 4.6 mm
Part Number: EXL-125-2546U
Mobile Phase: A: 0.5% glacial acetic acid (aq.)
B: MeCN

Time (mins)	%B
0	10
15	20
30	20
40	30

Flow Rate: 1.00 mL/min
Injection: 10 µL
Temperature: Ambient
Detection: UV, 350 nm
Method: ChP.2015, Vol. 1



1. Luteolin