

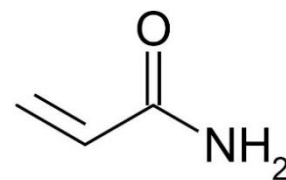
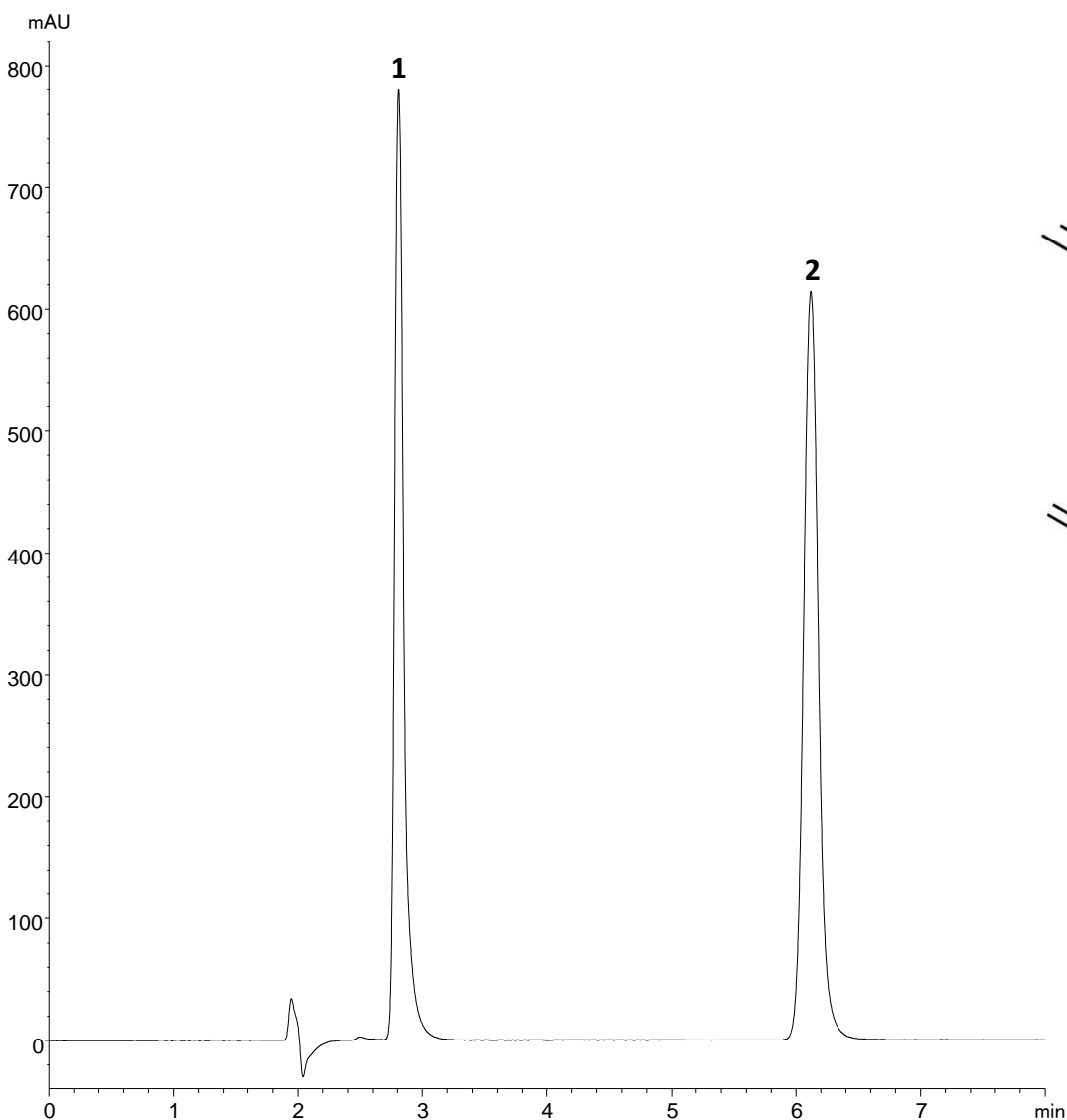
Separation of Acrylamide and Methacrylamide

ACE[®]
Ultra-inert
UHPLC & HPLC Columns

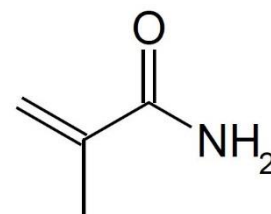
Application #AN6750

Conditions

Column:	ACE Excel 3 SuperC18
Dimensions:	150 x 4.6 mm
Part Number:	EXL-1111-1546U
Mobile Phase:	0.1 % formic acid in 97:3 H ₂ O/MeCN
Flow Rate:	1.0 mL/min
Injection:	5 µL
Temperature:	25 °C
Detection:	UV, 210 nm



1. Acrylamide



2. Methacrylamide

© 2018 ACT Ltd. All rights reserved. All products are available worldwide.

For more information contact your local ACE distributor or visit
www.ace-hplc.com or email: info@ace-hplc.com



ACE[®]
UHPLC & HPLC
Columns