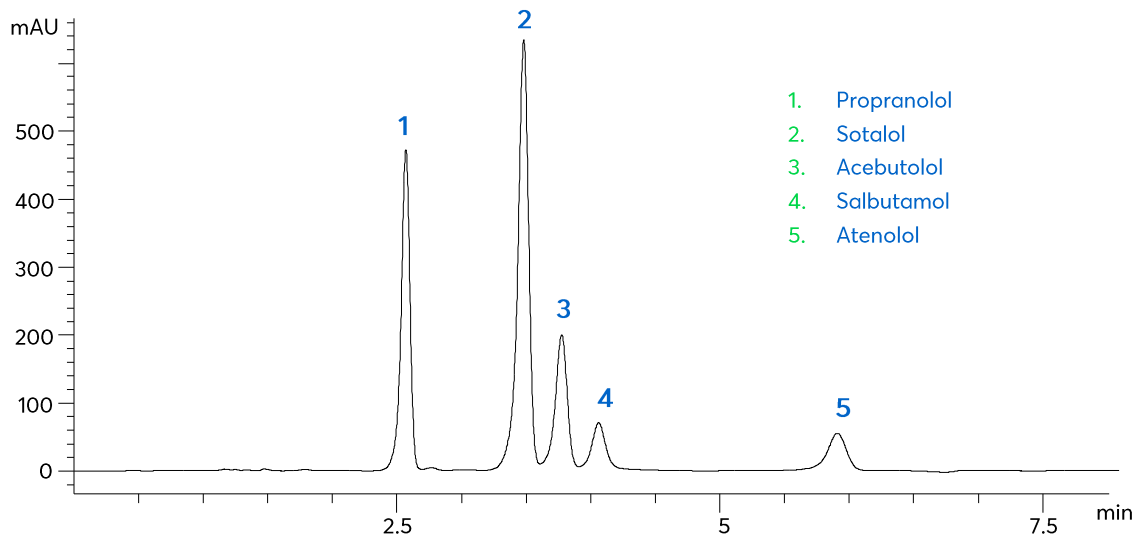


Application note #4530

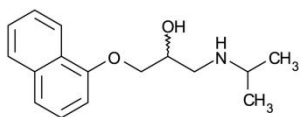
β -Blockers using HILIC Mode



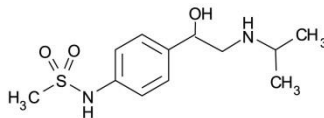
Method Details

CONDITIONS

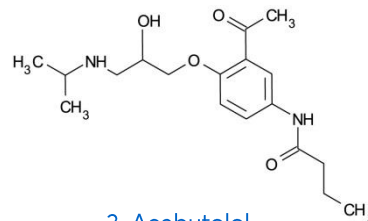
| | |
|---------------|--|
| Column: | ACE 5 HILIC-A |
| Dimensions: | 150 x 4.6 mm |
| Mobile Phase: | 12 mM ammonium formate pH 4.7 in MeCN/H ₂ O (88:12 v/v) |
| Flow Rate: | 1.5 mL/min |
| Injection: | 2 µL |
| Temperature: | 25 °C |
| Detection: | UV, 230 nm |



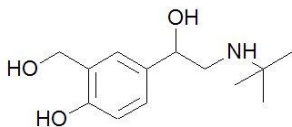
1. Propranolol



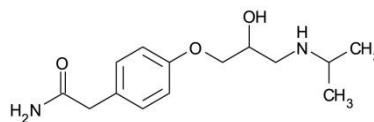
2. Sotalol



3. Acebutolol



4. Salbutamol



5. Atenolol

ORDERING TABLE

| Product | Details | Size | Part number |
|-------------------------|--------------------------------|--------------|--------------|
| Avantor® ACE® 5 HILIC-A | HPLC column | 150 x 4.6 mm | HILA-5-1546U |
| Acetonitrile | VWR CHROMANORM® gradient grade | 2.5 L | 83639.320 |
| Water | VWR CHROMANORM® gradient grade | 2.5 L | 83650.320 |
| Ammonium formate | VWR CHROMANORM® for LC-MS | 100 g | 84884.180 |