

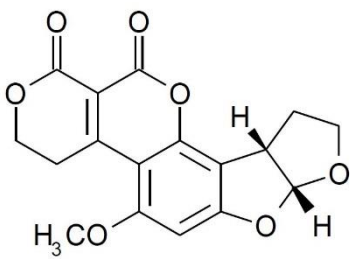
# Determination of Aflatoxins using Fluorescence Detection

**ACE**<sup>®</sup>  
Ultra-inert  
UHPLC & HPLC Columns

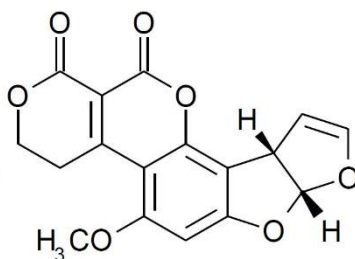
Application #AN6530

## Conditions

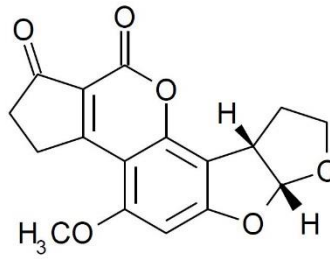
Columns: ACE Excel 5 C18  
Dimensions: 250 x 4.6 mm  
Part Numbers: EXL-121-2546U  
Mobile Phase: MeOH/MeCN/H<sub>2</sub>O (30:10:60 v/v/v)  
Flow Rate: 1.0 mL/min  
Injection: 25 µL  
Temperature: 35 °C  
Detection: Fluorescence,  $\lambda_{\text{ex}} = 360 \text{ nm}$ ,  $\lambda_{\text{em}} = 450 \text{ nm}$   
Method: ChP. 2015, Vol. 4



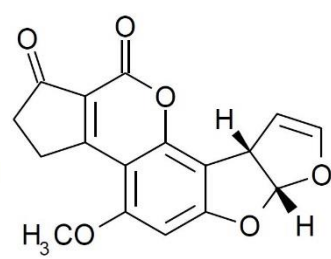
1. Aflatoxin G2



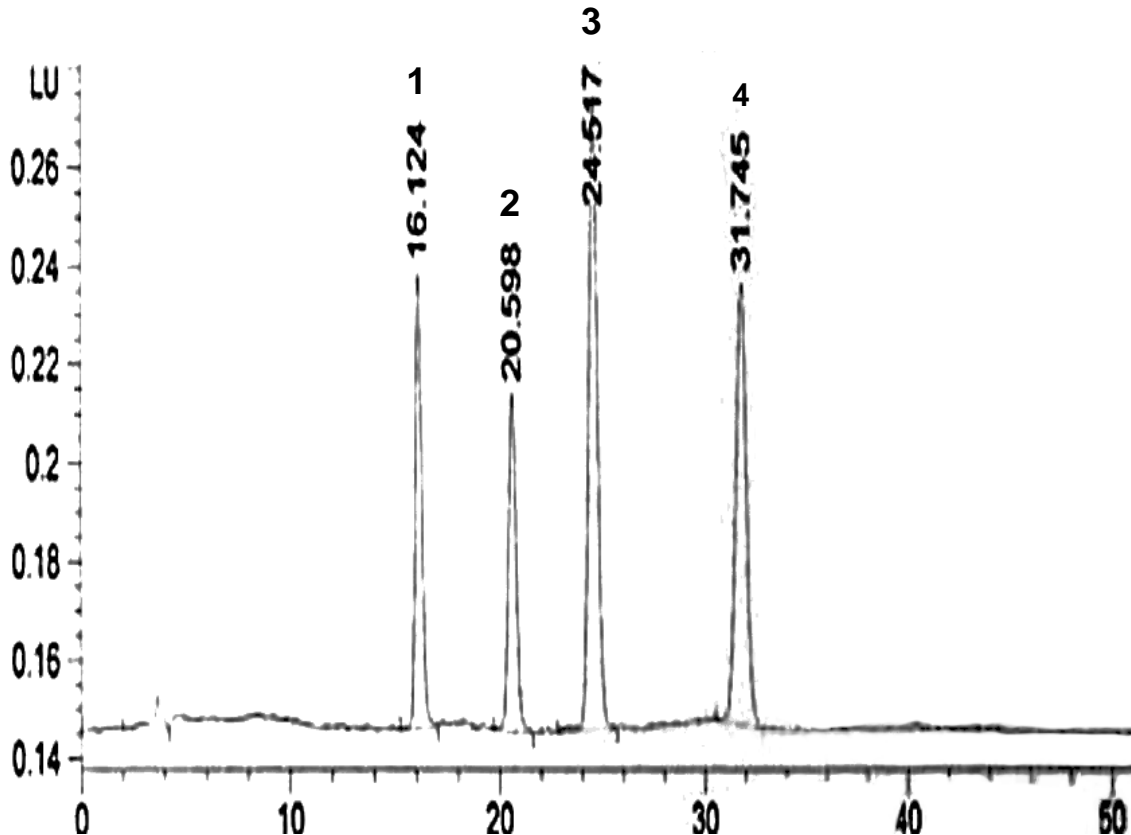
2. Aflatoxin G1



3. Aflatoxin B2



4. Aflatoxin B1



© 2018 ACT Ltd. All rights reserved. All products are available worldwide.

For more information contact your local ACE distributor or visit  
[www.ace-hplc.com](http://www.ace-hplc.com) or email: [info@ace-hplc.com](mailto:info@ace-hplc.com)

**ACE**<sup>®</sup>  
UHPLC & HPLC  
Columns