

Medium Molecular Weight Proteins

ACE[®]
Ultra-inert
UHPLC & HPLC Columns

Application #AN6090

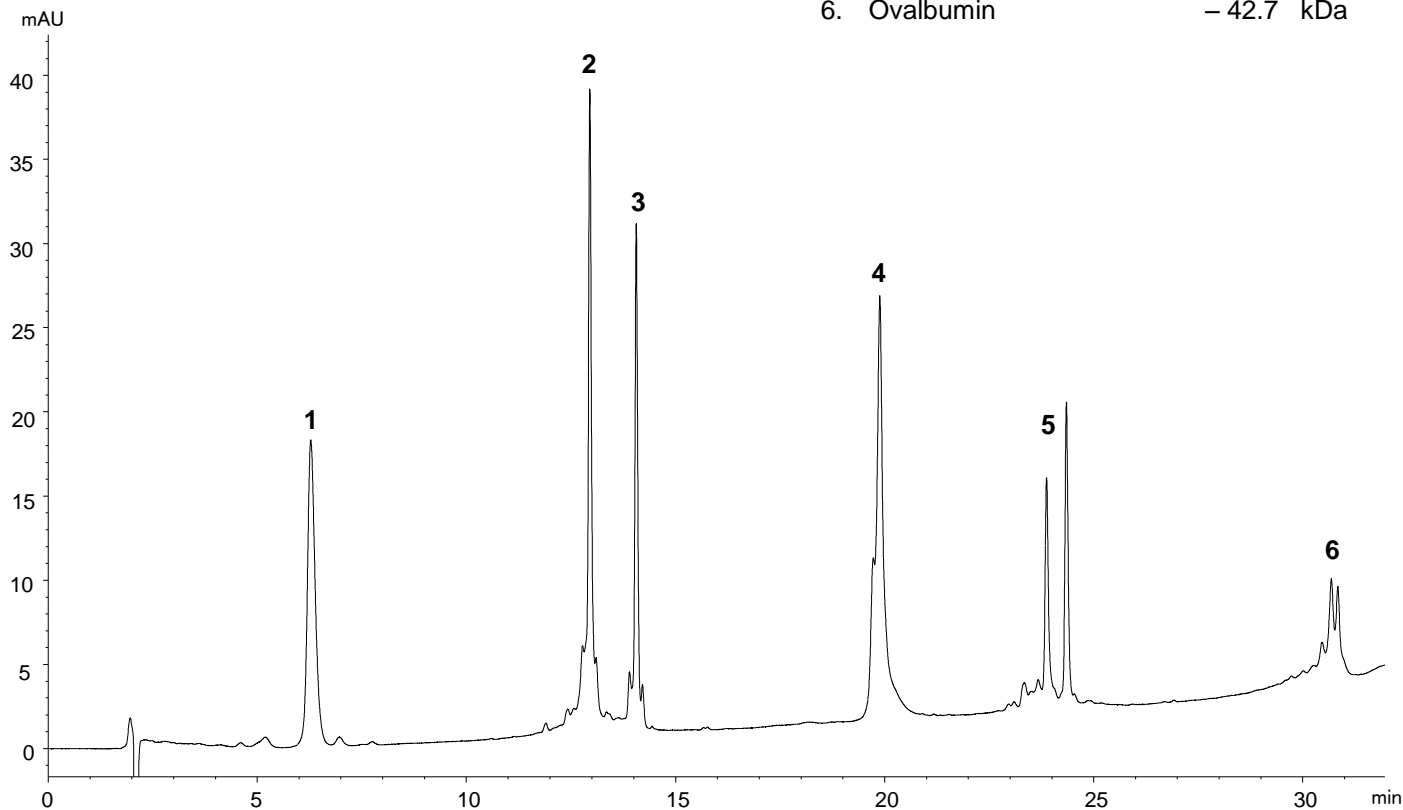
Conditions

Column: ACE 3 C8-300
Dimensions: 150 x 2.1 mm
Part Number: ACE-212-1502
Mobile Phase: A: 0.1% trifluoroacetic acid in H₂O
B: 0.1% trifluoroacetic acid in MeCN

| Time (mins) | %B |
|-------------|----|
| 0 | 25 |
| 25 | 50 |
| 28 | 80 |
| 30 | 80 |
| 31 | 25 |
| 45 | 25 |

Flow Rate: 0.21 mL/min
Injection: 5 µL
Temperature: 60 °C
Detection: UV, 220 nm

- | | |
|--------------------------|------------|
| 1. Ribonuclease A | - 13.7 kDa |
| 2. Cytochrome C (Equine) | - 12.4 kDa |
| 3. Cytochrome C (Bovine) | - 12.3 kDa |
| 4. Bovine Serum Albumin | - 66.5 kDa |
| 5. β-lactoglobulin | - 18.4 kDa |
| 6. Ovalbumin | - 42.7 kDa |



© 2018 ACT Ltd. All rights reserved. All products are available worldwide.

For more information contact your local ACE distributor or visit
www.ace-hplc.com or email: info@ace-hplc.com


ACE[®]
UHPLC & HPLC
Columns