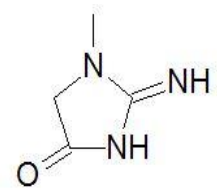
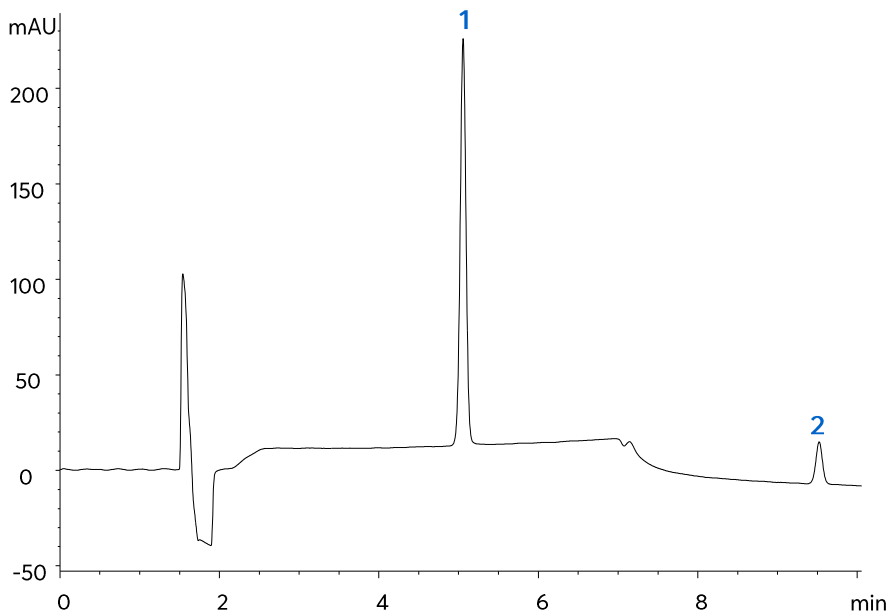
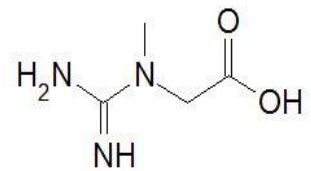


Creatine and Metabolite Creatinine using HILIC Mode



1. Creatinine



2. Creatine

Method Details

CONDITIONS

Column: ACE 5 HILIC-A
 Dimensions: 150 x 4.6 mm
 Mobile Phase: A: 2 mM ammonium formate pH 3.0 in MeCN/H₂O (95:5 v/v)
 B: 2 mM ammonium formate pH 3.0 in MeCN/H₂O (50:50 v/v)

| Time (mins) | %B |
|-------------|----|
| 0 | 5 |
| 10 | 55 |
| 11 | 55 |
| 12 | 5 |
| 31 | 5 |

Flow Rate: 1.5 mL/min
 Injection: 5 µL
 Temperature: 25 °C
 Detection: UV, 230 nm

ORDERING TABLE

| Product | Details | Size | Part number |
|-------------------------|--------------------------------|--------------|--------------|
| Avantor® ACE® 5 HILIC-A | HPLC Column | 150 x 4.6 mm | HILA-5-1546U |
| Acetonitrile | VWR CHROMANORM® gradient grade | 2.5 L | 83639.320 |
| Water | VWR CHROMANORM® gradient grade | 2.5 L | 83650.320 |
| Ammonium formate | VWR CHROMANORM® for LC-MS | 100 g | 84884.180 |