

Application note # C-13067

Separation of Sugar derivatives using the Avantor[®] Hichrom HI-XMLB column

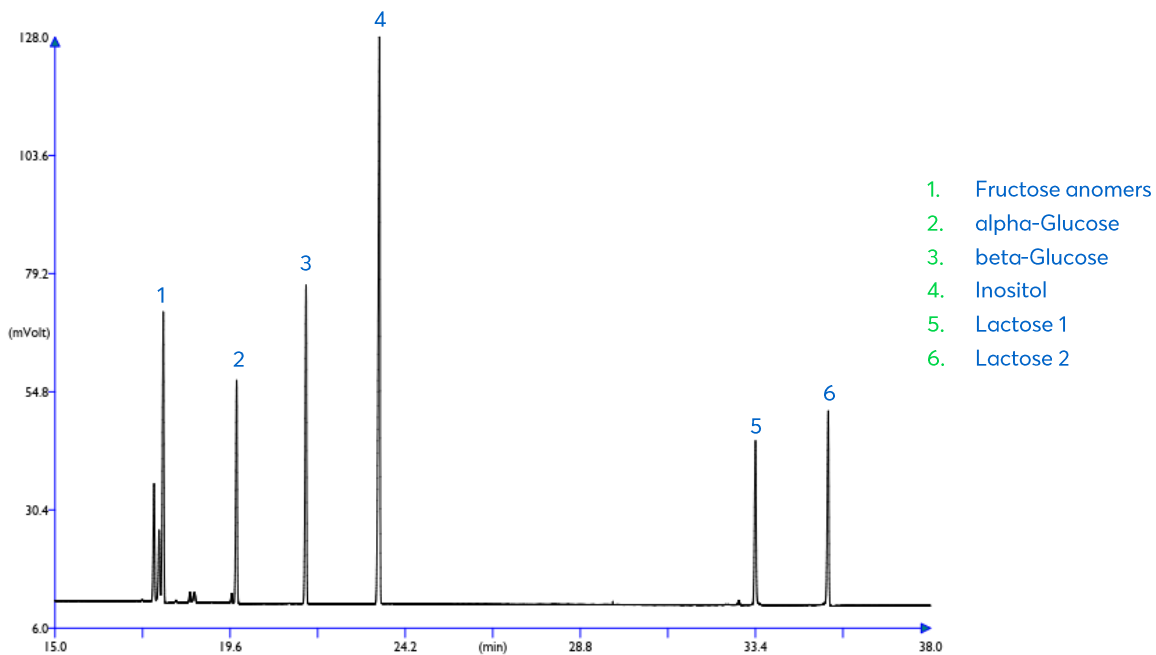


Figure 1: Separation of Sugar derivatives 1 using the HI-XMLB phase.

Method Details

CONDITIONS

Oven Program:	100°C, 5°C/min
Carrier Gas:	Hydrogen, 90kPa
Injector:	Split, 200°C
Detector:	FID, 300°C

HI-XMLB is a proprietary low polarity stationary phase developed for the analysis of semi-volatiles such as pesticides, PAHs and PCBs. Low bleeding and high temperature stability (up to 360 °C)

ORDERING TABLE

Product	Details	Dimensions	Part Number
Avantor® Hichrom HI-XMLB	GC Column	0.25 mm, 0.25 µm, 30 m	HI20-25-025-30