

Chiral GC Separation using the Avantor® Hichrom HI-DEX G-01 Phase

- 1. 2-Octanol enantiomers
- 2. Linalyl Acetate enantiomers
- 3. Menthol enantiomers
- 4. Isobornyl Acetate enantiomers
- 5. Camphor enantiomers

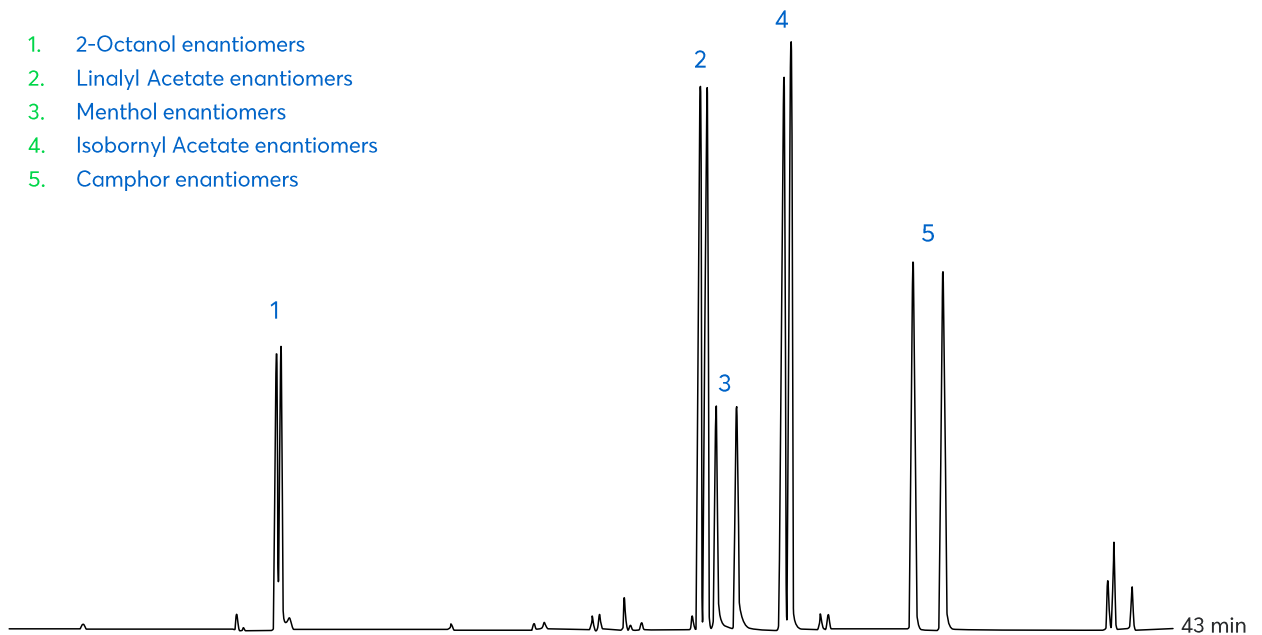


Figure 1: Separation of enantiomers found in flavours and fragrances using the HI-DEX G-01 phase

Method Details

CONDITIONS

Oven Program:	50 °C, 2 °C/min, 136 °C
Carrier Gas:	Hydrogen, 0.6 mL/min constant flow
Injector:	Split, 250 °C
Detector:	FID, 250 °C

The Hichrom HI-DEX G-01 is a proprietary cyclodextrin phase, useful in the analysis of chiral compounds in fragrances, pesticides and pharmaceuticals. This unique selectivity is also able to separate bornyl acetate enantiomers.

ORDERING TABLE

Product	Details	Dimensions	Part Number
Avantor® Hichrom HI-DEX G-01	GC Column	0.15 mm, 0.15 µm, 30 m	HI74-15-015-30

Acknowledgement: Dr. Cecilia Cagliero and Prof. Carlo Bicchi, Università di Torino, Dipartimento di Scienza e Tecnologia del Farmaco, Via P. Giuria, 9, Torino, Italy.