

Application note # C-12990

Chiral GC Separation using the Avantor® Hichrom HI-DEX B-SE Phase

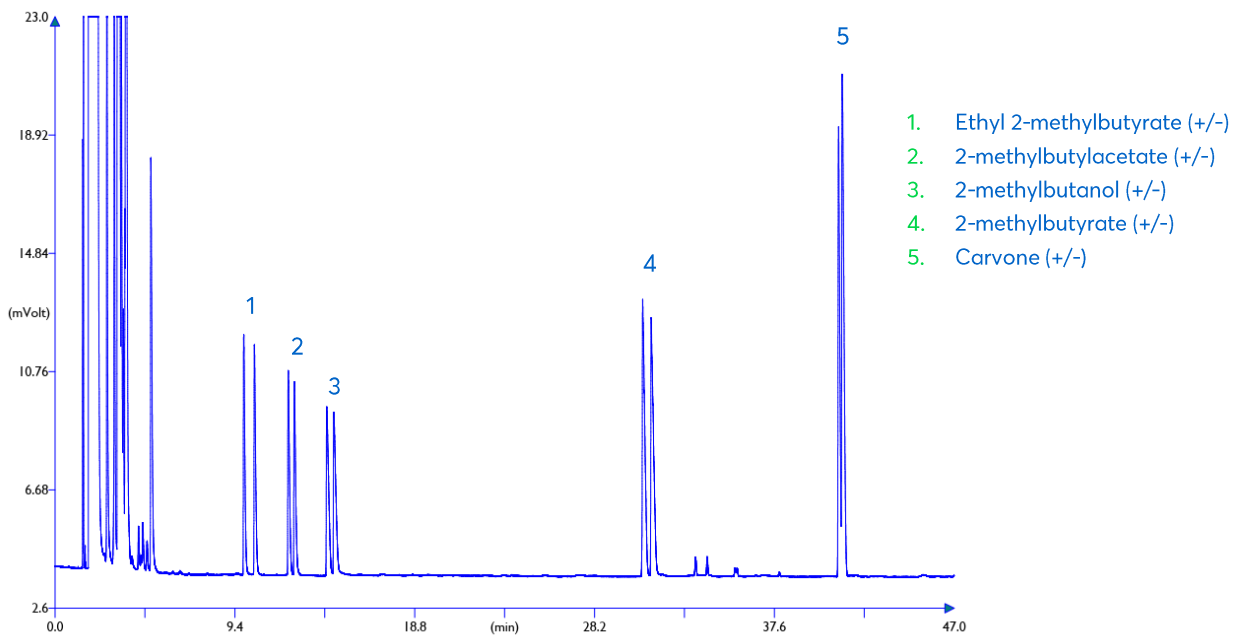


Figure 1: Gas chromatogram of chiral separation

Method Details

CONDITIONS

Oven Program:	40 °C, 2 °C/min, 134 °C
Carrier Gas:	Hydrogen, 80 kPa
Injector:	Split, 230 °C, 1:50 split ratio
Detector:	FID, 230 °C
Sample Dilution:	1mg/ mL each compound

The Hichrom HI-DEX B-SE is a proprietary cyclodextrin phase with a unique selectivity for the separation of enantiomers. Useful in the analysis of chiral compounds in fragrances, pesticides and pharmaceuticals.

ORDERING TABLE

Product	Details	Dimensions	Part Number
Avantor® Hichrom HI-DEX B-SE	GC Column	0.25 mm, 0.25 µm, 30 m	HI72-25-025-30