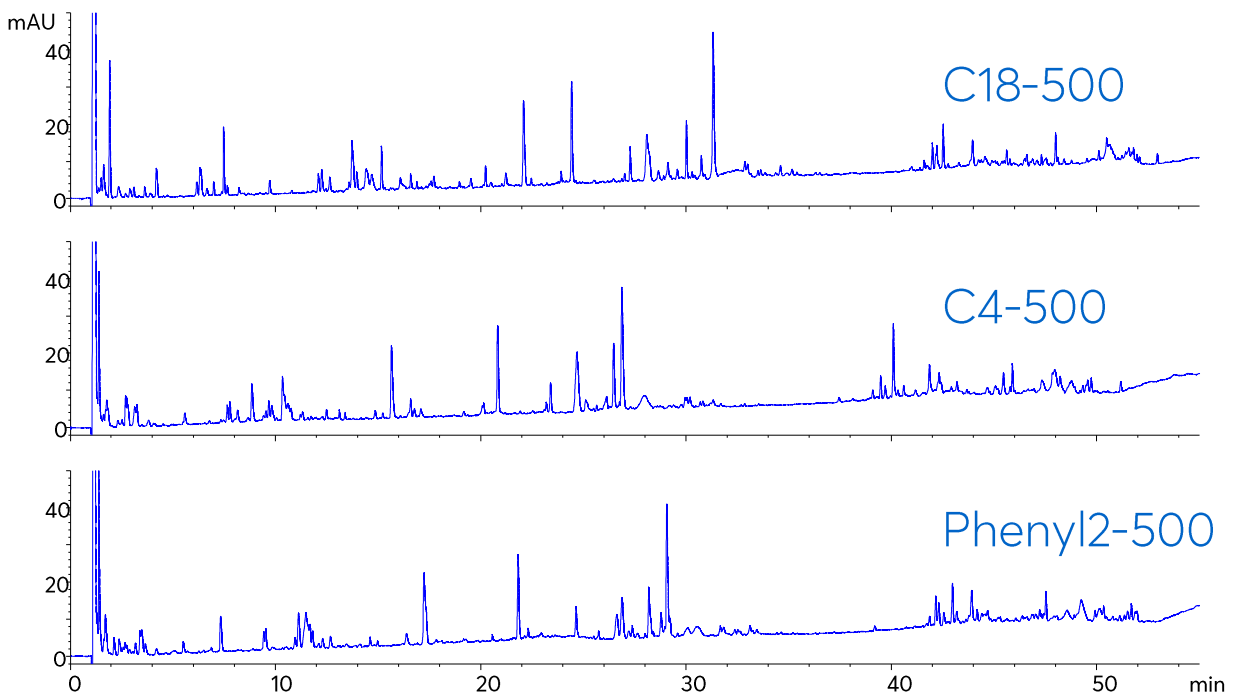


# Application note #7310

## Tryptic Digest of IgG on Avantor<sup>®</sup> ACE<sup>®</sup> UltraCore BIO 500 Å Columns



# Method Details

## CONDITIONS

Columns: Avantor® ACE® UltraCore BIO C18-500  
 Avantor® ACE® UltraCore BIO C4-500  
 Avantor® ACE® UltraCore BIO Phenyl2-500

Dimensions: 100 x 3.0 mm

Mobile Phases: A: 0.1% TFA in H<sub>2</sub>O  
 B: 0.1% TFA in MeCN

Gradient:

| Time (mins) | %B |
|-------------|----|
| 0           | 2  |
| 60          | 40 |
| 61          | 95 |
| 64          | 95 |
| 65          | 2  |
| 75          | 2  |

Flow Rate: 0.43 mL/min

Injection: 20 µL

Temperature: 60 °C

Detection: UV, 214 nm

System Dwell Volume: 525 µL

## ORDERING TABLE

| Product                                 | Details                             | Size         | Part number  |
|---|-------------------------------------|--------------|--------------|
| Avantor® ACE® UltraCore BIO C18-500     | HPLC column                         | 100 x 3.0 mm | BIO-250-1030 |
| Avantor® ACE® UltraCore BIO C4-500      | HPLC column                         | 100 x 3.0 mm | BIO-251-1030 |
| Avantor® ACE® UltraCore BIO Phenyl2-500 | HPLC column                         | 100 x 3.0 mm | BIO-252-1030 |
| Acetonitrile                            | VWR CHROMANORM® gradient grade      | 2.5 L        | 83639.320    |
| Water                                   | VWR CHROMANORM® gradient grade      | 2.5 L        | 83650.320    |
| Trifluoroacetic acid                    | VWR HiPerSolv CHROMANORM® for LC-MS | 10 x 1 mL    | 85049.001    |