

Application note # C-13068

Blood Alcohol Analysis using Headspace GC on Avantor® Hichrom HI-ALC 1 Column

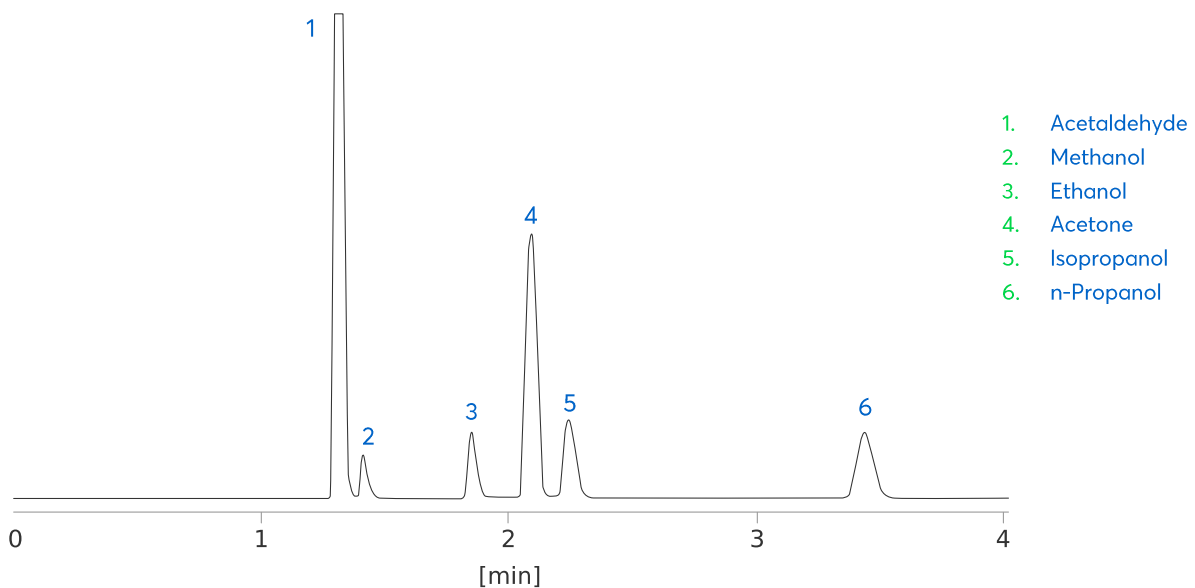


Figure 1: Gas chromatogram: Headspace analysis of blood alcohol using the Avantor® Hichrom HI-ALC 1 column.

Method Details

CONDITIONS

Oven Program:	40 °C Isothermal
Carrier Gas:	Hydrogen, 50 kPa
Injector:	Split, 250 °C, 1.0 mL with gas syringe
Detector:	FID, 250 °C
Sample:	Headspace of blood alcohol mix, hold 15 min @ 80 °C

The HI-ALC 1 column is a proprietary stationary phase developed for the analysis of blood alcohol samples. Offering alternative selectivity to the HI-ALC 2 column.

ORDERING TABLE

Product	Details	Dimensions	Part Number
Avantor® Hichrom HI-ALC 1	GC Column	0.32 mm, 1.50 µm, 30 m	HI36-32-150-30